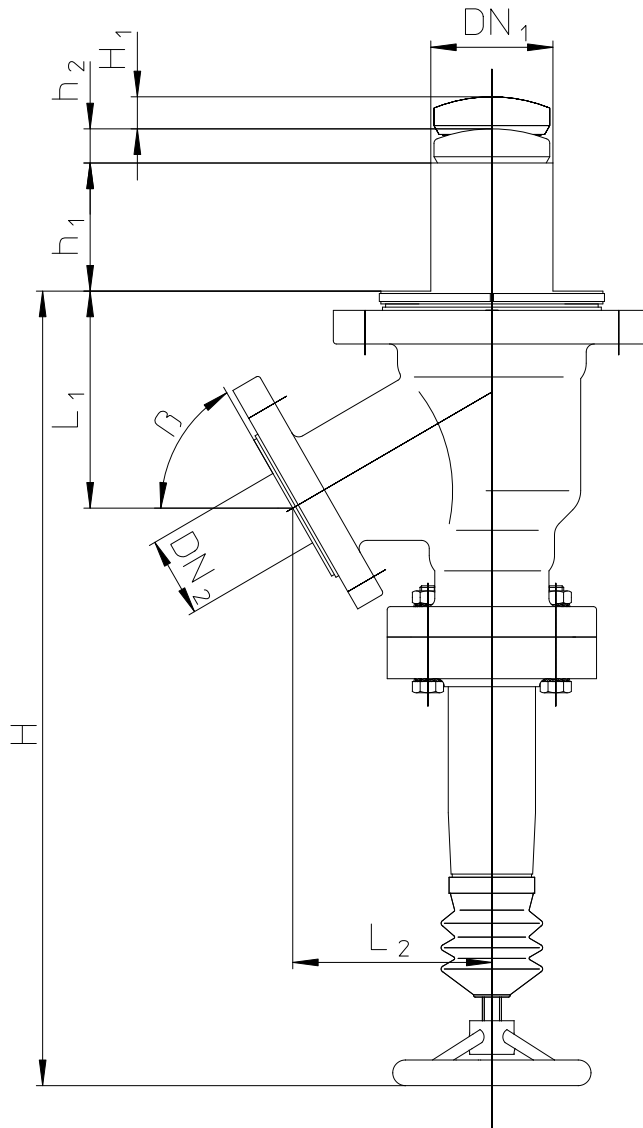


HUBVENTIL / GLOVE CONTROL VALVES / VANNE DE RÉGULATION À SOUFFLET

Baureihe/Series/Série Ausführung **Bodenauslaufventil
handbetätigt**
Design **Drain valve
manually operated**
Construction **Vanne de fond de cuve
commande manuelle**



BAV/F



	DN ₁	DN ₂	L ₁	L ₂	H	h ₁	h ₂	β	H ₁ *
	[mm] [(inch)]	[mm] [(inch)]	[mm] [(inch)]	[mm] [(inch)]	[mm] [(inch)]	[mm] [(inch)]	[mm] [(inch)]	[Grad] [(degree)]	[mm] [(inch)]
80/50	80 (3.15)	50 (2)	135,5 (5.33)	125,5 (4.94)	496 (19.53)	80 (3.15)	21 (0.83)	60°	20 (0.79)
100/80	100 (3.94)	80 (3.15)	143 (5.63)	152 (5.98)	446 (17.56)	90 (3.54)	11 (0.43)	45°	30 (1.18)
150/100	150 (5.91)	100 (3.94)	188 (7.4)	162 (6.37)	470 (18.5)	100 (3.94)	10 (0.39)	45°	30 (1.18)

H₁* = Hub / stroke / course

Modification techniques possibles sans préavis!
 Graphique non à l'échelle!
 Dimensions valables uniquement revêtues d'une signature!

This leaflet is subject to alteration!
 Draw not to scale!
 Certified for construction purposes only when signed!

Technische Änderungen vorbehalten!
 Nicht maßstäblich!
 Maße nur mit Unterschrift verbindlich!