

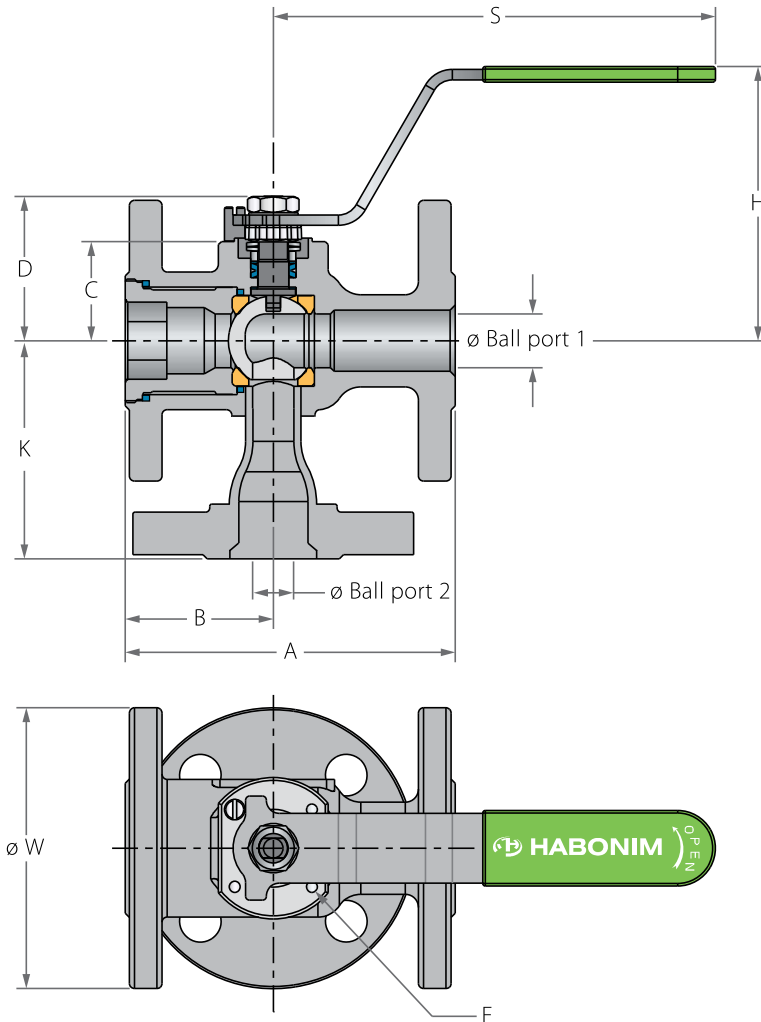
D31

D32

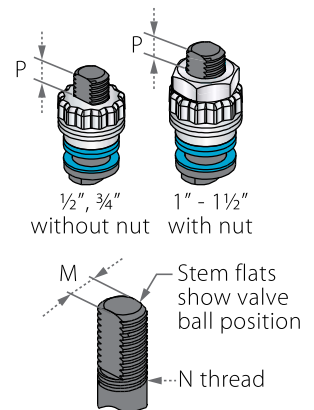
1/2"-2" | DN15-DN50 | CLASS 150/300

Diverter Floating Ball Flanged

Valve dimensions



Preparation for actuation



| Std. port | Unit | Ball port1 | Ball port2 | A | | B | C | D | H | K | | W | | M | N | P | F | Weight kg/lb | | Kv | Cv |
|-----------|------|------------|------------|--------|--------|-------|-------|-------|--------|-------|-------|--------|--------|--------|------|------|------------|--------------|------|------|-----|
| | | | | 150 | 300 | | | | | 150 | 300 | 150 | 300 | | | | | 150 | 300 | | |
| DN15 | mm | 10.5 | 9.5 | 108.00 | 140.00 | 46.00 | 29.00 | 38.00 | 92.00 | 85.5 | 84.5 | 151.00 | 88.90 | 95.25 | 5.54 | 3/8 | 6.65 (F03) | 36.00 | 1.7 | 2.4 | 2.8 |
| 1/2" | inch | 0.41 | 0.37 | 4.25 | 5.50 | 1.81 | 1.14 | 1.50 | 3.62 | 3.4 | 3.3 | 5.94 | 3.50 | 3.75 | 0.22 | UNF | 0.26 | 1.42 | 3.8 | 5.3 | 3.3 |
| DN20 | mm | 14.3 | 11.9 | 117.00 | 152.00 | 49.00 | 31.40 | 40.30 | 94.00 | 77.5 | | 151.00 | 98.55 | 163.07 | 5.54 | 3/8 | 6.65 (F03) | 36.00 | 2.3 | 3.3 | 4 |
| 3/4" | inch | 0.56 | 0.47 | 4.61 | 6.00 | 1.93 | 1.24 | 1.59 | 3.70 | 3 | | 5.94 | 3.88 | 6.42 | 0.22 | UNF | 0.26 | 1.42 | 5.1 | 7.3 | 5 |
| DN25 | mm | 20.6 | 15.9 | 127.00 | 165.00 | 57.00 | 38.20 | 55.60 | 103.50 | 83.9 | 109.2 | 170.00 | 107.95 | 123.95 | 7.54 | 7/16 | 7.40 (F04) | 42.00 | 3.1 | 4.6 | 8 |
| 1" | inch | 0.81 | 0.63 | 5.00 | 6.50 | 2.25 | 1.50 | 2.19 | 4.07 | 3.3 | 4.3 | 6.69 | 4.25 | 4.88 | 0.30 | UNF | 0.29 | 1.65 | 7.3 | 10.2 | 9 |
| DN40 | mm | 31.8 | 26.6 | 165.00 | 190.00 | 62.00 | 43.60 | 73.10 | 119.20 | 101.6 | 161 | 220.50 | 127.00 | 155.52 | 8.71 | 9/16 | 8.50 (F05) | 50.00 | 5.5 | 8.7 | 40 |
| 1 1/2" | inch | 1.25 | 1.05 | 6.50 | 7.50 | 2.44 | 1.72 | 2.88 | 4.70 | 4 | 6.3 | 8.68 | 5.00 | 6.10 | 0.34 | UNF | 0.33 | 1.97 | 12.2 | 19.3 | 46 |
| DN50 | mm | 38.1 | 35.0 | 178.00 | 216.00 | 68.00 | 48.30 | 77.80 | 123.90 | 127.8 | | 220.50 | 152.40 | 165.10 | 8.71 | 9/16 | 8.50 (F05) | 50.00 | 8.1 | 10.8 | 42 |
| 2" | inch | 1.5 | 1.38 | 7.00 | 8.50 | 2.67 | 1.90 | 3.06 | 4.88 | 5 | 5.12 | 8.68 | 6.00 | 6.50 | 0.34 | UNF | 0.33 | 1.97 | 18 | 24 | 49 |

D31

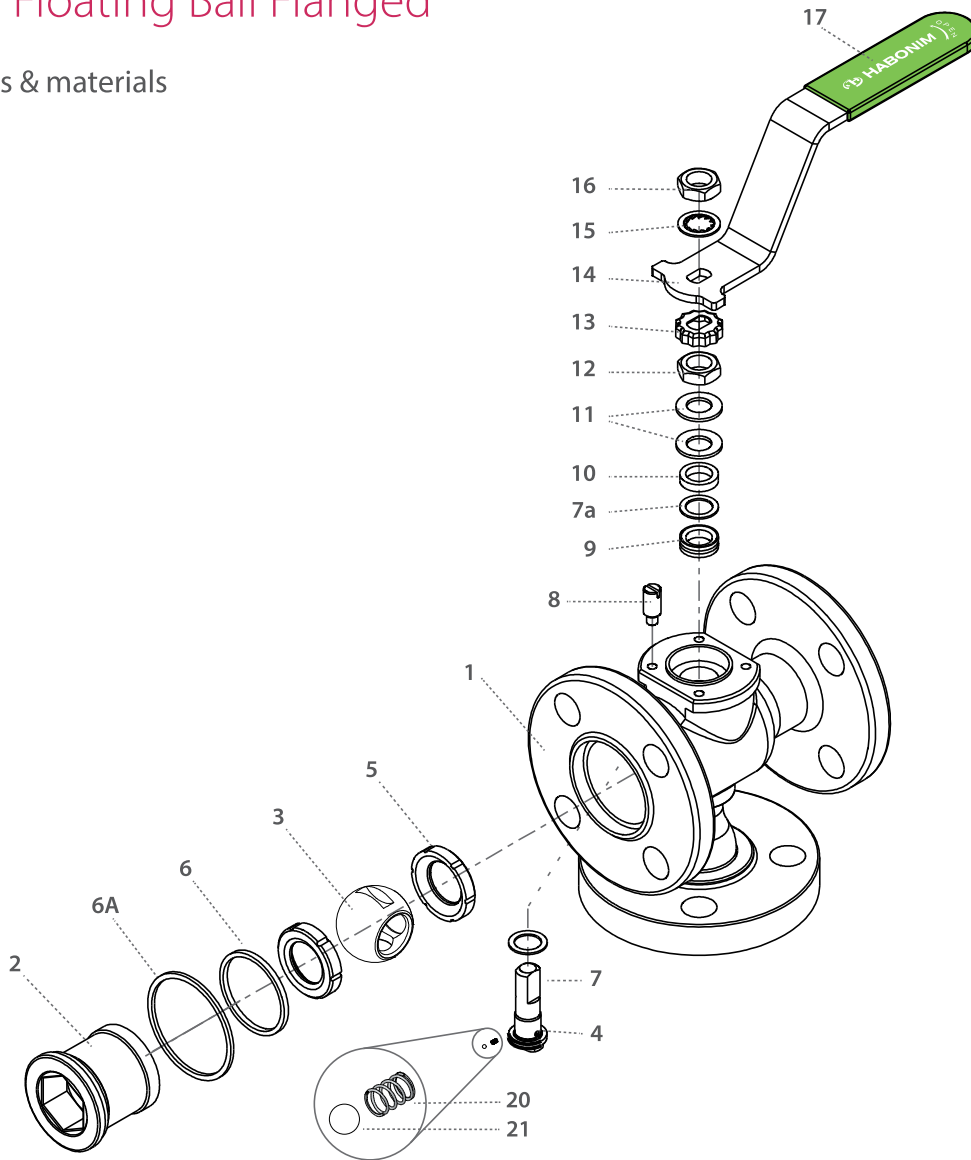
D32

1/2"-2" | DN15-DN50 | CLASS 150/300



Diverter Floating Ball Flanged

Components & materials



| Item | Description | Material specification | Qty. |
|------|--------------------|------------------------|------|
| 1 | Body | Acc. Ordering Code | 1 |
| 2 | Plug | Acc. Ordering Code | 1 |
| 3 | Ball | Acc. Ordering Code | 1 |
| 4 | Stem | Acc. Ordering Code | 1 |
| 5* | Seat | Acc. Ordering Code | 2 |
| 6* | Inner seal | PTFE | 1 |
| 6A | Outer seal | Acc. Ordering Code | 1 |
| 7* | Stem thrust seal | PEEK, CF PEEK, PCTFE | 1 |
| 7a | Anti-abrasion ring | PEEK, CF PEEK, PCTFE | 1 |
| 8 | Stop pin | S. Steel | 1 |
| 9* | Stem seal | CF PTFE, TFM | 1 |
| 10 | Follower | S. Steel | 1 |

| Item | Description | Material specification | Qty. |
|------|---------------------|------------------------|------|
| 11 | Disc spring | S. Steel | 2 |
| 12 | Stem nut | S. Steel | 1 |
| 13 | Locking clip | S. Steel | 1 |
| 14 | Handle | S. Steel | 1 |
| 15 | Serrated washer | S. Steel | 1 |
| 16 | Handle nut | S. Steel | 1 |
| 17 | Sleeve | PVC | 1 |
| 20 | Anti-static spring | S. Steel | 1 |
| 21 | Anti-static plunger | S. Steel | 1 |
| 23 | Tag (not shown) | S. Steel | 1 |

* Repair kit components

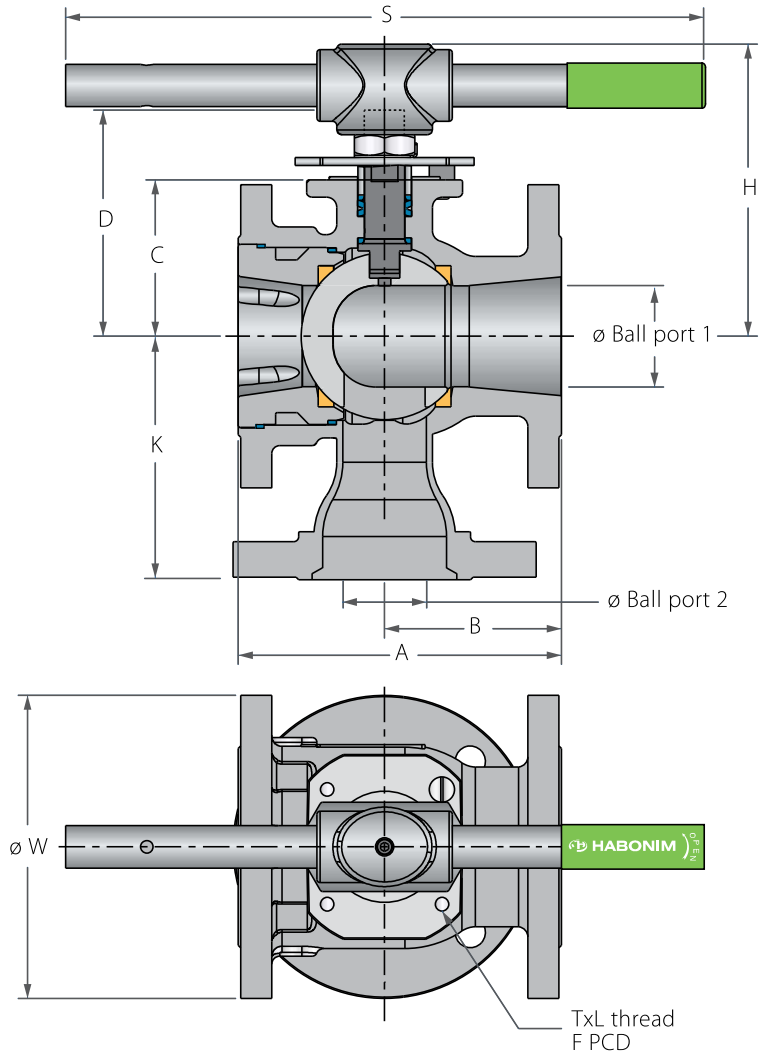
D31

D32

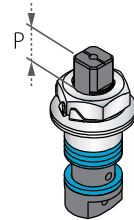
3"-8" | DN80-DN200 | CLASS 150/300

Diverter Floating Ball Flanged

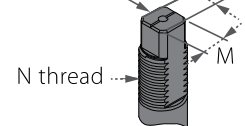
Valve dimensions



Preparation for actuation



Stem grooves show valve ball position



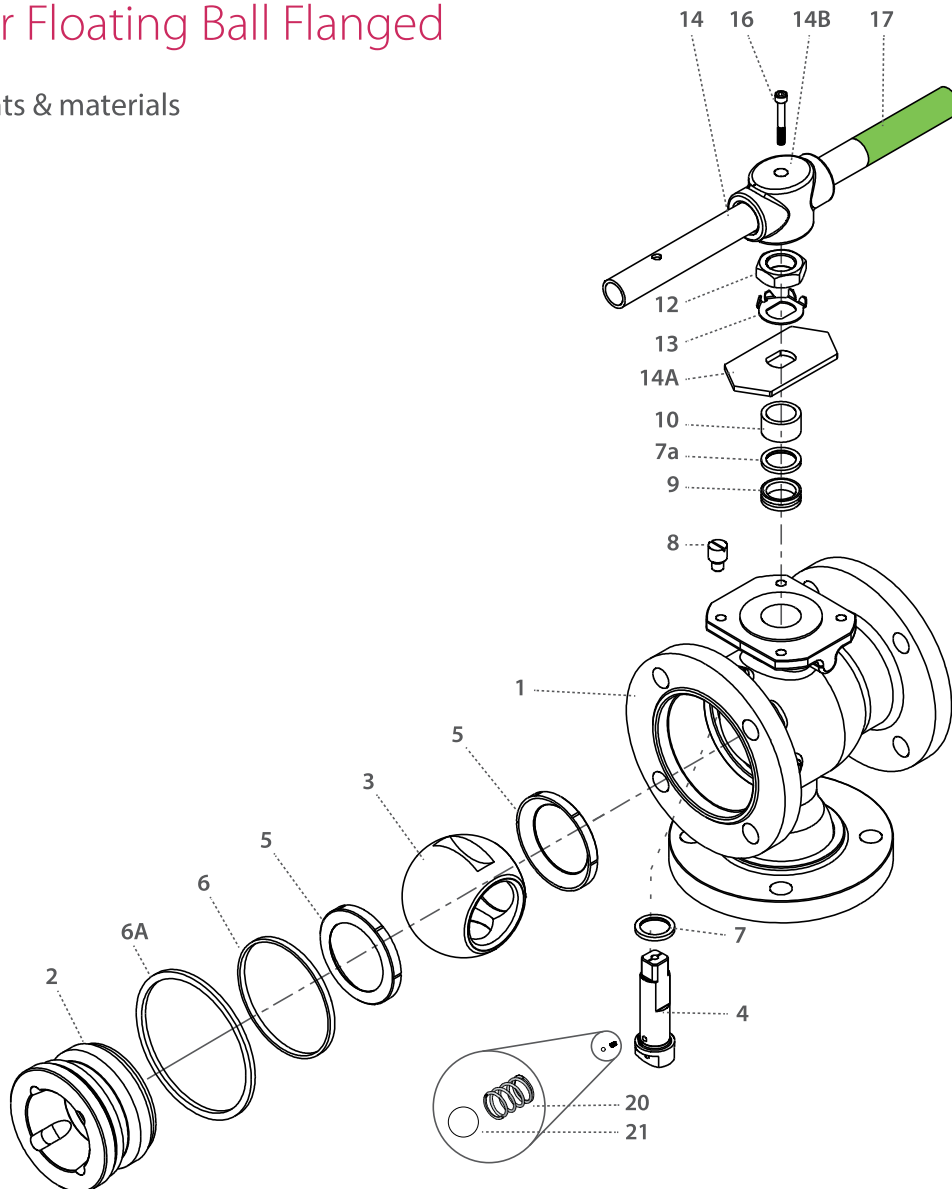
Square

| Std. port | Unit | Ball port1 | Ball port2 | A | | B | C | D | H | K | | S | | W | | M | M-DD | N | P | F | TxL | Weight kg/lb | | Kv |
|-----------|------|------------|------------|--------|--------|--------|--------|--------|--------|--------|--------|--------|--------|--------|-------|-------|--------|-------------|--------|--------|--------|--------------|-----|----|
| | | | | 150 | 300 | | | | | 150 | 300 | 150 | 300 | 150 | 300 | | | | | | | 150 | 300 | |
| DN80 | mm | 63.50 | 50.00 | 203.00 | 284.00 | 92.00 | 98.40 | 145.00 | 185.10 | 153.00 | 160.00 | 400.00 | 190.50 | 209.55 | 18.90 | 15.90 | 1"-14 | 16.70 (F10) | 102.00 | M10x20 | 18.00 | 22.70 | 129 | |
| 3" | inch | 2.50 | 1.97 | 8.00 | 11.18 | 3.62 | 3.88 | 5.72 | 7.28 | 6.02 | 6.3 | 15.75 | 7.50 | 8.25 | 0.74 | 0.63 | UNS-2A | 0.66 | 4.02 | M10x20 | 40.00 | 50.40 | 150 | |
| DN100 | mm | 82.60 | 63.00 | 229.00 | 305.00 | 102.00 | 114.10 | 161.00 | 201.00 | 185.00 | | 610.00 | 228.60 | 254.00 | 18.90 | 15.90 | 1"-14 | 16.70 (F10) | 102.00 | M10x20 | 28.20 | 36.30 | 182 | |
| 4" | inch | 3.25 | 2.48 | 9.00 | 12.00 | 4.00 | 4.49 | 6.34 | 7.91 | 7.28 | | 24.01 | 9.00 | 10.00 | 0.74 | 0.63 | UNS-2A | 0.66 | 4.02 | M10x20 | 62.80 | 80.60 | 211 | |
| DN150 | mm | 111.10 | 78.00 | 267.00 | 403.20 | 108.00 | 157.40 | 226.00 | 285.90 | 250.00 | | 916.00 | 279.40 | 317.50 | 28.45 | 23.75 | 1½"-12 | 26.20 (F12) | 125.00 | M12x20 | 41.00 | 69.00 | 437 | |
| 6" | inch | 4.38 | 3.07 | 10.50 | 15.88 | 4.25 | 6.20 | 8.91 | 11.25 | 9.84 | | 36.08 | 11.00 | 12.50 | 1.12 | 0.94 | UNF-2A | 1.03 | 4.92 | M12x20 | 91.00 | 153.00 | 507 | |
| DN200 | mm | 144.40 | 98.00 | 292.00 | 419.00 | 163.50 | 185.20 | 254.00 | 313.60 | 300.00 | | 916.00 | 342.90 | 381.00 | 28.45 | 23.75 | 1½"-12 | 26.20 (F12) | 125.00 | M12x20 | 82.00 | 105.00 | 698 | |
| 8" | inch | 5.68 | 3.86 | 11.50 | 16.50 | 5.37 | 7.30 | 10.00 | 12.34 | 11.81 | | 36.08 | 13.50 | 15.00 | 1.12 | 0.94 | UNF-2A | 1.03 | 4.92 | M12x20 | 182.00 | 233.00 | 810 | |



Diverter Floating Ball Flanged

Components & materials



| Item | Description | Material specification | Qty. |
|------|--------------------|------------------------------|------|
| 1 | Body | Acc. Ordering Code | 1 |
| 2 | Plug | Acc. Ordering Code | 1 |
| 3 | Ball | Acc. Ordering Code | 1 |
| 4 | Stem | Acc. Ordering Code | 1 |
| 5* | Seat | Acc. Ordering Code | 2 |
| 6* | Body seal | PTFE | 1 |
| 6A | Outer seal | Acc. Ordering Code | |
| 7* | Stem thrust seal | PEEK, CF PEEK, PCTFE (KEL-F) | 1 |
| 7a | Anti-abrasion ring | PEEK, CF PEEK, PCTFE (KEL-F) | 1 |
| 8 | Stop pin | S. Steel | 1 |
| 9* | Stem seal | CF PTFE, TFM | 1 |
| 10 | Follower | S. Steel | 1 |

| Item | Description | Material specification | Qty. |
|------|---------------------|------------------------|------|
| 11 | Disc spring | S. Steel | 2 |
| 12 | Stem nut | S. Steel | 1 |
| 13 | Tab lock washer | S. Steel | 1 |
| 14 | Handle | S. Steel | 1 |
| 14A | Stop plate | S. Steel | 1 |
| 14B | Wrench head | S. Steel | 1 |
| 16 | Wrench bolt | S. Steel | 1 |
| 17 | Sleeve | PVC | 1 |
| 20 | Anti-static spring | S. Steel | 2 |
| 21 | Anti-static plunger | S. Steel | 2 |
| 23 | Tag (not shown) | S. Steel | 1 |

* Repair kit components

D31

S31

D32

S32



Diverter I Side Entry Floating Ball Flanged - Ordering Code System

"Mandatory option" options are marked with **green background** | "Standard offer" options are marked with **light green background**

| | | | | | | | | | | | | | | | | | | | | | | | | | | | | |
|------|---|----------|---|---|---|--------|---|--------|----|-------------------|----|--------------------|----|---------------|---------------------|---------------------|----|----------------|----|----|----|----------|----|------------------|----|---|---|----|
| 1 | 2 | 3 | 4 | 5 | 6 | 7 | 8 | 9 | 10 | 11 | 12 | 13 | 14 | 15 | 16 | 17 | 18 | 19 | 20 | 21 | 22 | 23 | 24 | # | 26 | . | . | 30 |
| 6 | 0 | | | | D | 3 | 1 | W | - | 6 | 6 | 6 | 6 | A | T | G | / | B | W | 1 | 0 | 9 | 0 | | | | | |
| Size | | Features | | | | Series | | Design | | Body/end material | | Ball/Stem material | | Seat material | Inner Seal material | Outer Seal material | | End connection | | | | Rotation | | Special features | | | | |

| Size (1-2) | | |
|------------|------|-----|
| Code | inch | mm |
| 05 | ½" | 15 |
| 07 | ¾" | 20 |
| 10 | 1" | 25 |
| 15 | 1½" | 40 |
| 20 | 2" | 50 |
| 30 | 3" | 80 |
| 40 | 4" | 100 |
| 60 | 6" | 150 |
| 80 | 8" | 200 |

| Features (3-6) | |
|----------------|-------------------------------|
| D | Diverter bottom entry |
| S | Diverter side entry |
| O | Clean assembly for O2 service |
| H | H Hydrogen service |

| Series (7-8) | |
|--------------|--------------------------------|
| D31 | ANSI #150 flanged bottom entry |
| S31 | ANSI #150 flanged side entry |
| D32 | ANSI #300 flanged bottom entry |
| D32 | ANSI #300 flanged side entry |

| Design (9) | |
|------------|----------------------------------|
| W | Total HermetiX Integrity package |

| Body/Ends material (11-12) | |
|----------------------------|------------------------|
| 6 | S. SteelCF8M/CF3M |
| 4 | C. steel A216 WCB/A105 |
| D | Duplex A479 |
| K | Super Duplex A479 |
| S | 254SMO A479 |

| Ball material (13) | |
|--------------------|------------------------|
| 6 | S. SteelCF8M/CF3M |
| M | High Strength S. Steel |
| S | 254SMO |
| D | Duplex |
| K | Super Duplex |

| Stem material (14) | |
|--------------------|------------------------|
| 6 | S. Steel316L |
| M | High Strength S. Steel |
| Z | Inconel 718 B637 |
| D | Duplex A479 |
| K | Super Duplex A479 |
| S | 254SMO A479 |

| Seat material (15) | |
|--------------------|-------------|
| A | TFM |
| P | CF PTFE |
| K | CF PEEK |
| L | Virgin Peek |
| U | UHMWPE |
| C | PCTFE |
| Y | Delrin |
| W | PVDF |
| T | PTFE |

| Inner Seal Material (16) | |
|--------------------------|-------------------|
| T | PTFE |
| A | TFM |
| G | Expanded graphite |
| U | UHMWPE |
| V | Viton |
| B | NBR |

| Outer Seal (17) | |
|-----------------|-------------------|
| G | Expanded graphite |
| T | PTFE |
| A | TFM |
| U | UHMWPE |
| V | Viton |
| B | NBR |

| End Connection (19-22) | |
|------------------------|--------------------|
| Flanged | |
| 150 | ASME B16.5 #150 RF |
| 300 | ASME B16.5 #300 RF |
| PN16 | EN1092 PN16 RF |
| PN40 | EN1092 PN40 RF |

| Rotation (23 -25) | |
|-------------------|---|
| 90 | 90 degrees rotation |
| 180 | 180 degrees rotation applicable for bottom entry diverter valve L |

| Special Features (24-30) | |
|--------------------------|--|
| Valve Special Stem Seals | |
| HC | High Cycle service |
| AAX | FDA compliant stem seal. TFM thrust bearing and X shape gasket |
| PPX | CF PTFE thrust and X shape gasket |
| CAX | PCTFE thrust and TFM X shape gasket |
| CPX | PCTFE thrust and CF PTFE X shape gasket |